

West Corners Fire Department
Payne Road and Union Center-Maine Highway
Tanker Fill Site
Modified 4-8-2009

On Sunday, February 1, 2009, the West Corners Fire Department held its usual Officers' Training. At that particular meeting, Chiefs and other members from local mutual aid departments were also invited to participate in a discussion of how we should fill tankers at the Payne Road fill site. The other departments included Campville, West Endicott, Union Center and Maine.

The discussion focused on where to place the filling engine and tankers and how to route the tankers into and out of the site. We also discussed priorities including safety for the fire police, allowing residents' traffic into and out of the development, and how to maneuver the tankers into and out of the fill site. At the end we agreed upon the following fill site procedure.

The distance from Elsie Drive to Union Center-Maine Highway (Rt 26) is 500 feet. The "Fill Engine" will turn from Route 26 onto Payne Road and will wrap the hydrant at that intersection. The Fill Engine will then lay down the south side of Payne Road and will stop about 200 feet from the hydrant. 2 100' lengths of LDH will connect the Fill Engine to the hydrant. The Fill Engine should stop short of the driveway in that area.

The primary tanker fill site will be in front (west) of the Fill Engine. The secondary fill site will be behind (east of) the Fill Engine. The secondary fill site should be placed near the Fill Engine so that it will not interfere with the turning radius of the tankers turning off of Route 26.

Tankers arriving to be filled will turn from Route 26 onto Payne Road, will drive past the Fill Engine and will park on the south side of Payne Road in front of the Fill Engine. After the tanker is filled, it will then drive forward to the Elsie Drive intersection and will turn around there. The tanker will then return past the Fill Engine to the Route 26 intersection and will return to the dump site.

If the primary fill site is occupied when a tanker arrives, that tanker will drive up to the Payne Road and Elsie Drive intersection and turn around. It will then return past the Fill Engine and will park on the south side of Payne Road behind (east of) the Fill Engine. The water connections will be made, and the filling will start after the tanker in the primary fill site is filled. When the tanker in the secondary fill site is filled, it will drive to the Payne Road and Route 26 intersection and return to the dump site.

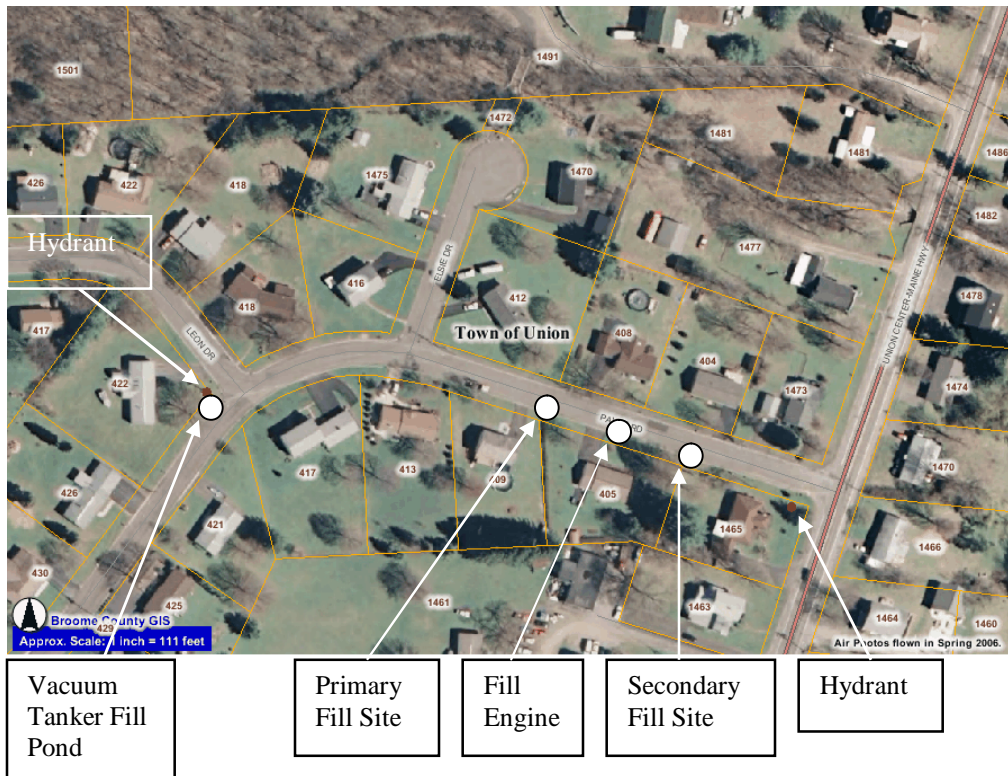
If both fill sites are busy, the tanker can drive up to Elsie Dr and stage there.

There are several instructions for this fill site:

1. No vehicles or personnel will be stationed on Route 26. That includes Fire Police and Chiefs and their vehicles.

2. If any non-tanker vehicles MUST be parked on Rt 26, they will be parked well off the road with no lights turned on. We cannot think of a reason to park them on Rt. 26 at all.
3. If tankers are stacking up at the fill site, they will preferably be staged on Payne Road or Elsie Drive. If they MUST be staged on Rt 26, they will be parked well off the road on the shoulder, and their emergency lights will be off. All emergency warning lights are to be turned off on Payne Road – that is, all rotators and other red flashing emergency lights are to be turned off. It is not necessary to hassle the residents further.
4. When a tanker returns to the fire scene, it will turn on its emergency lights as it approaches the Rt 26/Payne Road intersection and will proceed normally as an emergency vehicle.
5. Fire Police may consider placing warning signs along Rt 26 noting Emergency Vehicles are operating in the area.
6. Payne Road is to be kept passable as much as possible to allow the local residents, fire personnel and other tankers to enter and exit the development. Local civilian traffic may be delayed briefly as tankers are moved around during operations. Fire Police will control that traffic.

How will the vacuum tankers be handled? They will generally respond with their equipment and with 3 personnel. Enroute to the fire, the tanker will stop at the fill site and will leave the portable pond and associated equipment plus one person to operate their fill site. Their portable pond will be set up on Payne Road at the intersection of Leon Drive near that hydrant. Then the tanker will continue to the dump site. The portable pond will be set up and filled before the vacuum tanker returns. It is the intention here that the vacuum tankers operate on their own separate from the Fill Engine.



This is the current plan for operating this fill site. It has been modified from the original to resolve some problems that were found. If we find other problems with it, we would expect to modify this plan to resolve them.

Summary: It is our intent to keep Rt 26 clear of all fire personnel and vehicles when working at the fill site. It is also our intent to minimize the hassle to our residents – no flashing lights, no sirens, no blocked streets or driveways, minimized street tie-ups.

Its 2:00am and there are fire engines, tankers, flashing lights, sirens, yelling....outside YOUR front door!!!! Be gentle.

Thank you,

Dave Ring
 Assistant Chief for Training
 West Corners Fire Department